



DBEY

BAD BRAINS



BAD BRAINS ARE ONE OF MY FAVORITÈ PUNK/HARD-CORE GROUPS OF ALL TIME. I FIRST HEARD THEM AT THE BEGINNING OF 1984 WHEN MY FRIEND LENT ME THE BRILLIANTLY CURATED AND TITLED ALTERNATIVE TENTACLES COMPILATION "LET THEM EAT JELLY-BEANS"(A REAGAN DESSERT FAVORITE UPDATE TO THE MARIE ANTOINETTE SLOGAN "LET THEM EAT CAKE", IMPLYING THAT REAGAN WAS JUST AS OUT OF TOUCH WITH THE PEOPLE AS THE FRENCH MONARCH WAS A FEW CENTURIES BEFORE). THE BAD BRAINS SONG "PAY TO CUM" FROM THEIR FIRST ALBUM WAS ON THE COMPILATION ALONG WITH SONGS BY BLACK FLAG, THE DEAD KENNEDYS, THE CIRCLE JERKS, FLIPPER, ETC.. AFTER LISTENING TO THAT ALBUM, I THEN WENT OUT TO FIND FULL LENGTH RECORDS BY ALL OF THOSE BANDS. I SOON DISCOVERED MINOR THREAT AS WELL, AND LEARNED THAT BAD BRAINS HAD INFLUENCED THEIR VOCALIST IAN MACKAYE AND BLACK FLAG VOCALIST HENRY ROLLINS WHO WERE BOTH FROM WASHINGTON DC WHERE BAD BRAINS GOT THEIR START. I LOVED THE BAD BRAINS SONG "PAY TO CUM" AND I WANTED TO HEAR MORE. MY FRIEND BILL HAD THE ROIR CASSETTE OF THE SELF-TITLED FIRST BAD BRAINS ALBUM AND LENT IT TO ME... I WAS QUICKLY HOOKED! THE RECORD HAD BLISTERING SPEED, POWER, ATTITUDE, AGGRESSION, AND A HEAP OF GREAT MELODY. ON TOP OF THE ADRENALINE-INDUCING HARDCORE SONGS, THERE WERE REGGAE SONGS ON THE ALBUM THAT MADE IT MUCH EASIER FOR ME TO ADMIT TO MY PUNK FRIENDS THAT I WAS SECRETLY JAMMIN' TO BOB MARLEY. I WAS EXCITED WHEN I REALIZED THAT ALL OF THE MEMBERS OF BAD BRAINS

ARE BLACK. THEY ALL GREW UP IN WASHINGTON D.C. AND EVOLVED FROM A JAZZ/ROCK FUSION BAND INTO A PUNK BAND AFTER DIGGING THE SEX PISTOLS. PUNK ROCK WAS CERTAINLY NOT THE EASIEST MUSICAL ROUTE TO EARNING A LIVING, BUT TO BE THE ONLY BLACK GUYS IN THE THE GENRE TOOK REAL COURAGE ON BAD BRAINS PART! THE BAD BRAINS STOOD OUT FOR THEIR ORIGINALITY, AND WERE A HUGE INFLUENCE ON NUMEROUS ARTISTS, INCLUDING THE BEASTIE BOYS. I CONFIRMED A RUMOR RECENTLY, THAT THE BEASTIE BOYS, WHO STARTED OUT AS A HARDCORE BAND, CHOSE THEIR NAME TO HAVE THE SAME BB INITIALS AS BAD BRAINS.

THE FIRST BAD BRAINS ALBUM COVER WITH THE CAPITOL BEING STRUCK BY LIGHTNING IS ONE OF THE MOST ICONIC ILLUSTRATIONS IN THE HISTORY OF PUNK. CONSIDERING THERE WERE NO PLACES IN CHARLESTON TO PURCHASE ONE OF THEIR T-SHIRTS, AND I WAS BROKE ANYWAY, OF COURSE I MADE MY OWN HOME-MADE BAD BRAINS T-SHIRTS WITH MY VERSIONS OF THAT COVER ON BOTH WHITE (DRAWN WITH SHARPIE) AND BLACK(PAPER-CUT STENCIL). I LOVED THE ROIR ALBUM AND ALSO REALLY LIKED THE FOLLOW UP "ROCK FOR LIGHT", BUT I WAS BLOWN AWAY WHEN I PICKED UP "I AGAINST I", THE BANDS THIRD ALBUM. "I AGAINST I" DIVERSIFIED THE BAD BRAINS' SOUND WITH FUNK GROOVES, METAL FLOURISHES, SOULFUL VOCALS AND SONG SPEEDS OTHER THAN "THE WORLD'S FASTEST". WHEN I SAW THAT THE SONG "I AGAINST I" WAS PLAYING ON MTV'S 120 MINUTES, I THOUGHT THAT BAD BRAINS WOULD SURELY ACHIEVE

THE COMMERCIAL SUCCESS THEY DESERVED TO COM-
PLEMENT THE CRITICAL ACCLAIM THEY'D EARNED.
THAT DIDN'T HAPPEN BECAUSE MAYBE BAD BRAINS
WERE TOO FAR AHEAD OF THE CURVE.

I FIRST SAW BAD BRAINS LIVE IN '89 ON THEIR TOUR
FOR "QUICKNESS", THE FOLLOW UP ALBUM TO "I
AGAINST I" AT THE LIVING ROOM, THE SAME VEN-
UE IN PROVIDENCE R.I. WHERE THE VIDEO FOR THE
SONG I AGAINST I HAD BEEN SHOT. THE SHOW WAS
THE MOST ENERGETIC AND CHAOTIC TORNADO I HAVE
EVER BEEN PART OF. THE VENUE WAS WAY OVER CA-
PACITY AND THE CROWD WAS COMPLETELY POSSESSED
BY THE MUSIC. AT ONE POINT, THE WHOLE CROWD
WAS SURGING FORWARD AND I WAS ABLE TO LIFT MY
FEET OF THE GROUND WITHOUT USING MY HANDS,
BASED SOLELY ON THE PRESSURE OF ALL THE PEO-
PLE. THE FEELING WAS EXHILARATING AND TERRI-
FYING AT THE SAME TIME. I WAS AMAZED BY SINGER
HR'S SHOWMANSHIP AND THE BAND'S CHOPS... THEY
WERE F'ING TIGHT EVEN THOUGH THE SCENE WAS UN-
HINGED MAYHEM!

I'VE SEEN BAD BRAINS MANY MORE TIMES SINCE
THEN. I'VE ALSO MADE A FEW ART PIECES IN TRIB-
UTE TO BAD BRAINS OVER THE YEARS, AND THROUGH
MY FRIEND GLEN E. FRIEDMAN, I WAS ABLE TO DO
AN OFFICIAL ART COLLABORATION WITH THE BAND IN
2008. AS A RESULT OF THAT COLLABORATION, I BE-
CAME ACQUAINTANCES WITH BASSIST DARRYL JENIFER
WHO ASKED ME IF I'D BE INTERESTED IN DOING THE

ART FOR THE BAD BRAINS ALBUM "INTO THE FUTURE"
WHICH FEATURED THE BAND'S ORIGINAL LINEUP. IT
WAS HARD FOR ME TO GRASP THAT A BAND I LOVED
SO MUCH WOULD CONSIDER ME TO DO THEIR ALBUM
ART, BUT OF COURSE I SAID "HELL YEAH". DARRYL
SHARED SOME OF THE SONGS FROM THE "INTO THE
FUTURE" ALBUM AND THEY ROCKED! I THINK THE MA-
TERIAL ON THIS RECORD HAS A VIBE SIMILAR TO "I
AGAINST I" AND "QUICKNESS" ... POWERFUL BUT ALSO
WITH A GREAT GROOVE.

WITH THIS NEW OBEY CLOTHING COLLABORATION,
I'M INCREDIBLY HONORED TO CREATE ART WITH BAD
BRAINS AND TO BE CONNECTED TO A BAND THAT HAS
PROVIDED SO MUCH INSPIRATION, ENERGY, AND SHEER
PLEASURE FOR ME OVER THE YEARS. THE GOAL WAS
TO MAKE NEW IMAGES AND CLOTHING THAT REFER TO
BAD BRAINS HISTORY AND AUTHENTICITY, BUT ALSO
ADD SOME OBEY FLAVOR. THANKS BAD BRAINS FOR
THE INSPIRATION AND FOR LETTING US COLLABORATE
WITH YOU AS WE MOVE INTO THE FUTURE ! KEEP THAT
P.M.A.(POSITIVE MENTAL ATTITUDE)!!!!

IF YOU DON'T HAVE BAD BRAINS SELF TITLED ROIR
DEBUT, "ROCK FOR LIGHT", "I AGAIST I", "QUICK-
NESS", "BLACK DOTS", "THE YOUTH ARE GETTING
RESTLESS" OR "INTO THE FUTURE"... GET THEM
NOW...THEY ARE ALL ESSENTIAL!



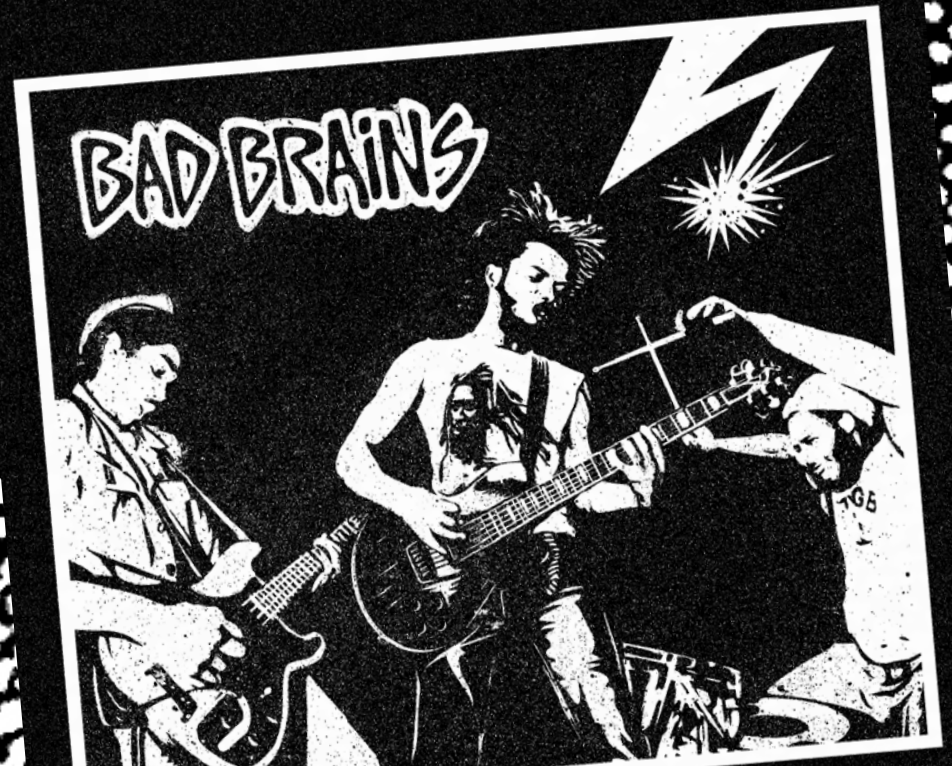






THE BAD BRAINS CHANGED THE WAY I UNDERSTOOD
WHAT LIVE MUSIC COULD BE.
AFTER I FIRST SAW THEM IN 1979, I HAD TO THROW
OUT ALMOST EVERYTHING I
UNDERSTOOD ABOUT MUSIC AND START AGAIN, WITH
THEM AS THE FOUNDATION.

-HENRY ROLLINS







I THINK THE BAND TO REALLY TURN THE CORNER ON THINGS WAS THE BAD BRAINS. THEY STARTED PLAYING D.C. IN LATE '78. I REMEMBER FIRST SEEING THEM—MY FIRST SHOW I WENT TO WAS THE CHUMPS, URBAN VERBS AND THE CRAMPS AT THE HALL OF NATIONS IN GEORGETOWN. ... AND THE BAD BRAINS GUYS WERE THERE. WE WERE JUST THINKING "WHO ARE THESE GUYS? THEY ARE THE COOLEST-LOOKING GUYS." THEY HAD "BAD BRAINS" WRITTEN ON THEIR PANTS AND STUFF. WE KEPT SEEING THEM AROUND, AND FINALLY IN JUNE OF 1979, THE DAMNED FROM ENGLAND PLAYED THE BAYOU AND THE BAD BRAINS OPENED FOR 'EM. I WAS AT THAT SHOW, AND THAT WAS JUST AN ABSOLUTELY LIFE-CHANGING GIG. THAT WAS THE GREATEST GIG—IT WAS THE FIRST TIME WE SAW THE BAD BRAINS. AND FROM THAT POINT ON, IT WAS SORT OF LIKE... THIS SCENE IS GONNA HAPPEN.

—IAN MACKAYE







家學研究

JACKETS

BAD BRAINS CAPITOL JACKET 121800238

- Regular fit coaches jacket
- A smooth hand snap down coaches jacket with light coating for water resistency. Interior body is lined with soft tricot and welt pocket entry at bottom
- Features lightning bolt with OBEY logo screen printed at chest and Bad Brains graphic at back
- 100% Polyester



A.

	COLOR	S	M	L	XL	XXL
A.	BLACK					

BAD BRAINS MA-1 BOMBER 121800230

- Regular fit bomber jacket
- A soft nylon with light coating for water resistency and insulated with soft filling. A soft flexible rib at collar, cuff and waistband. Welt pockets at bottom to snap close
- Features screen printing at chest, graphic at backside and logo enamel pin on utility pocket
- SHELL: 100% Nylon; LINING: 100% Polyester; FILLING: 100% Polyester



A.

	COLOR	S	M	L	XL	XXL
A.	BLACK					

WOVENS

BAD BRAINS OXFORD WOVEN 181200164

- Slim fit long sleeve button up shirt
- A button down collar shirt in oxford stripes and a thin contrast piping underside of collarstand
- Features Bad Brains signature lightning bolt with OBEY logo embroidered at chest. All buttons detail in logo white pearl color
- 100% Cotton



A.

	COLOR	S	M	L	XL	XXL
A.	WHITE MULTI					

BAD BRAINS MILITARY WOVEN 181200165

- Regular fit long sleeve military woven shirt
- A great military field shirt with double chest pockets and embroidered canvas tape
- Features signature lightning bolt with OBEY logo pin at pocket flap and iconic collaborative graphic screen printed at back side
- 100% Cotton



A.

	COLOR	S	M	L	XL	XXL
A.	ARMY					

PREMIUM



- RE-IGNITION**
165361259
- Regular fit basic short sleeve tee with a set in rib neck trim
 - Made in extra soft lightweight cotton
 - 100% Cotton

	COLOR	S	M	L	XL	XXL
A.	BLACK					
B.	WHITE					

PREMIUM



- BAD BRAINS ROCKET**
165361261
- Regular fit basic short sleeve tee with a set in rib neck trim
 - Made in extra soft lightweight cotton
 - 100% Cotton

	COLOR	S	M	L	XL	XXL
A.	WHITE					
B.	BLACK					



- BLACK DOTS**
165361260
- Regular fit basic short sleeve tee with a set in rib neck trim
 - Made in extra soft lightweight cotton
 - 100% Cotton

	COLOR	S	M	L	XL	XXL
A.	GOLD					
B.	BLACK					



- BAD BRAINS PUNK A-GO-GO**
165361262
- Regular fit basic short sleeve tee with a set in rib neck trim
 - Made in extra soft lightweight cotton
 - 100% Cotton

	COLOR	S	M	L	XL	XXL
A.	BLACK					
B.	WHITE					

PREMIUM



BAD BRAINS CAPITOL
165361263

- Regular fit basic short sleeve tee with a set in rib neck trim
- Made in extra soft lightweight cotton
- 100% Cotton

	COLOR	S	M	L	XL	XXL
A.	BLACK					
B.	WHITE					

PREMIUM



BAD BRAINS PMA PHOTO
165361265

- Regular fit basic short sleeve tee with a set in rib neck trim
- Made in extra soft lightweight cotton
- 100% Cotton

	COLOR	S	M	L	XL	XXL
A.	MINT					
B.	WHITE					



BAD BRAINS X OBEY
165361264

- Regular fit basic short sleeve tee with a set in rib neck trim
- Made in extra soft lightweight cotton
- 100% Cotton

	COLOR	S	M	L	XL	XXL
A.	WHITE					
B.	BLACK					



MIND POWER
165361266

- Regular fit basic short sleeve tee with a set in rib neck trim
- Made in extra soft lightweight cotton
- 100% Cotton

	COLOR	S	M	L	XL	XXL
A.	NATURAL					
B.	WHITE					

PREMIUM



OBEY X BAD BRAINS SKELTON
165361268

- Regular fit basic short sleeve tee with a set in rib neck trim
- Made in extra soft lightweight cotton
- 100% Cotton

	COLOR	S	M	L	XL	XXL
A.	WHITE					
B.	PINK					

PREMIUM



WE GOT THAT PMA
165361270

- Regular fit basic short sleeve tee with a set in rib neck trim
- Made in extra soft lightweight cotton
- 100% Cotton

	COLOR	S	M	L	XL	XXL
A.	PACIFIC BLUE					
B.	WHITE					



BAD BRAINS HAS A POSSE
165361269

- Regular fit basic short sleeve tee with a set in rib neck trim
- Made in extra soft lightweight cotton
- 100% Cotton

	COLOR	S	M	L	XL	XXL
A.	WHITE					
B.	SQUASH					



RETURN OF THE ORIGINAL BAD BRAINS
165361271

- Regular fit basic short sleeve tee with a set in rib neck trim
- Made in extra soft lightweight cotton
- 100% Cotton

	COLOR	S	M	L	XL	XXL
A.	GOLD					
B.	WHITE					

TONAL TIE DYE



A.

**BAD BRAINS SKELETON
165361275**

- Regular fit basic short sleeve tee with a set in rib neck trim with custom spiral tonal tie dye
- Made in extra soft lightweight cotton
- 100% Cotton

	COLOR	S	M	L	XL	XXL
A.	BLEACH SPIRAL					

CUSTOM



A.

B.

**BAD BRAINS X OBEY WORLD TOUR '89
163511274**

- Regular fit short sleeve tee with rib neck trim
- Features a lightweight pigment dyed fabrication for a dusty look and a smooth hand
- 100% Cotton

	COLOR	S	M	L	XL	XXL
A.	BLACK					
B.	WHITE					



A.



B.

**BAD BRAINS QUICKNESS PHOTO
165361277**

- Regular fit basic short sleeve tee with a set in rib neck trim with custom spiral tonal tie dye
- Made in extra soft lightweight cotton
- 100% Cotton

	COLOR	S	M	L	XL	XXL
A.	YELLOW					
B.	BLACK					



A.



B.

**RETURN OF THE ORIGINAL BAD BRAINS
166141271**

- Regular fit crew neck tee with solid rib trims
- Features a super soft fine knit jersey fabrication
- 100% Cotton

	COLOR	S	M	L	XL	XXL
A.	WHITE					
B.	YELLOW					

LONG SLEEVE



A.



B.

**BAD BRAINS X OBEY PROPAGANDA
164901272**

- Regular fit crew neck long sleeve tee with rib trims
- Made in an heavyweight cotton
- 100% Cotton

	COLOR	S	M	L	XL	XXL
A.	BLACK					
B.	WHITE					

GRAPHIC PULLOVER HOOD



A.



B.



**BAD BRAINS ROCKET
111731261**

- Regular fit hooded fleece with pouch pocket, rib trim and set in sleeves
- 80% Cotton / 20% Polyester

	COLOR	S	M	L	XL	XXL
A.	BLACK					
B.	WHITE					



A.



B.



**BAD BRAINS CONQUERING LION
164901273**

- Regular fit crew neck long sleeve tee with rib trims
- Made in an heavyweight cotton
- 100% Cotton

	COLOR	S	M	L	XL	XXL
A.	BLACK					
B.	WHITE					



A.



B.



**RE-IGNITION
111731259**

- Regular fit hooded fleece with pouch pocket, rib trim and set in sleeves
- 80% Cotton / 20% Polyester

	COLOR	S	M	L	XL	XXL
A.	HEATHER GREY					
B.	BLACK					

GRAPHIC PULLOVER HOOD



**OBEY X BAD BRAINS SKELTON
111731268**

- Regular fit hooded fleece with pouch pocket, rib trim and set in sleeves
- 80% Cotton / 20% Polyester

	COLOR	S	M	L	XL	XXL
A.	RED					
B.	BLACK					

PREMIUM FLEECE



**BAD BRAINS BOLT HOOD
111610055**

- Slim fit pullover hooded fleece with rib trims
- Features an embroidery at chest, fleece fabrication and novelty stitching along seams
- Includes OBEY specialty labels at side seam interior neck
- 80% Cotton / 20% Polyester

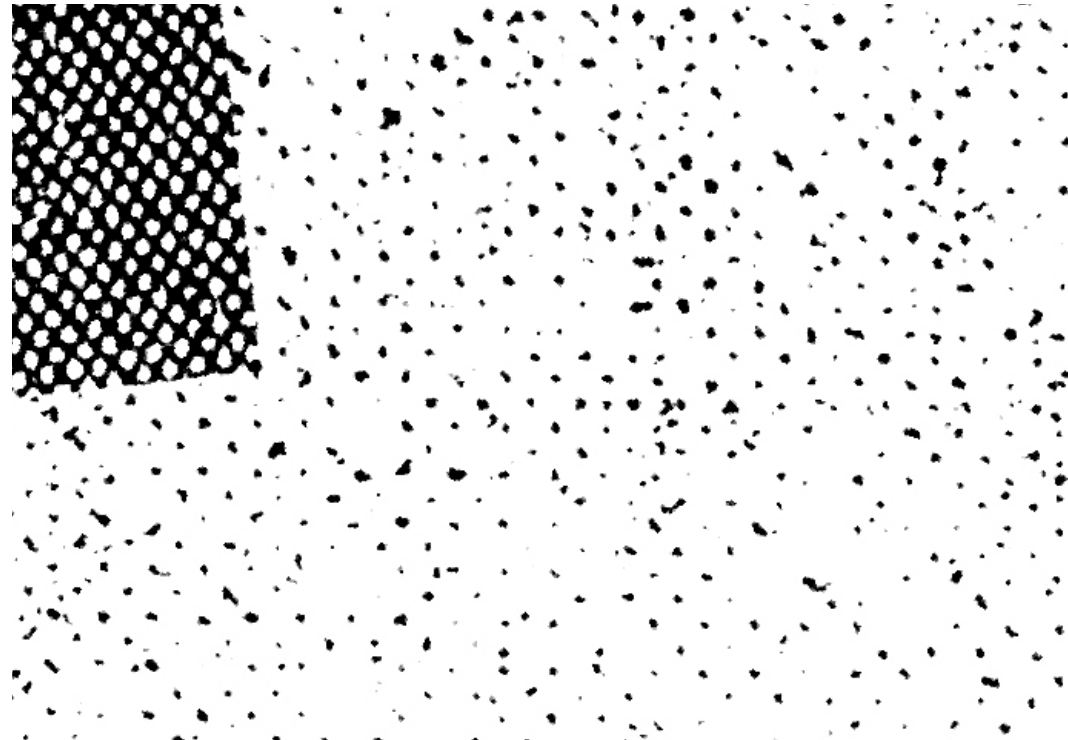
	COLOR	S	M	L	XL	XXL
A.	BLACK					
B.	ARMY					



**BAD BRAINS PMA PHOTO
111731265**

- Regular fit hooded fleece with pouch pocket, rib trim and set in sleeves
- 80% Cotton / 20% Polyester

	COLOR	S	M	L	XL	XXL
A.	WHITE					
B.	BLACK					



HEADWEAR

**BAD BRAINS BOLT HAT
100580004**

- Unconstructed low profile fit
- Unstructured 6 panel hat with OBEY original embroidery and self compression closure with brass clip. OBEY flag label at closure
- 100% Cotton



	COLOR	O/S				
A.	BLACK					
B.	ARMY					

**BAD BRAINS LION SNAPBACK
100570017**

- Unconstructed low profile fit
- Unstructured nylon snapback, OBEY original screen print, adjustable snap closure and rope detail. OBEY flag label at closure
- 100% Nylon



	COLOR	O/S				
A.	BLACK					
B.	WHITE					

HEADWEAR

**BAD BRAINS BOLT BEANIE
100030097**

- Extra shallow fit ribbed roll cuff beanie with OBEY original Bolt embroidery
- 100% Acrylic



	COLOR	O/S				
A.	ARMY					
B.	BLACK					

**BAD BRAINS BOLT BERET
100540012**

- Classic fit wool blend beret with custom Bad Brains lightning pin.
- 75% Wool / 25% Cotton



	COLOR	O/S				
A.	BLACK					

ACCESSORIES



A.

**BAD BRAINS BOLT SOCKS
100260095**

- Athletic socks with comfortable french terry footing
- Bad Brains jacquard artwork and screened logo at foot
- 80% Cotton / 18% Nylon / 2% Spandex



B.

	COLOR	O/S				
A.	BLACK					
B.	WHITE					

ACCESSORIES

**BAD BRAINS PMA PHOTO
100551265**

- Large cotton canvas tote bag with extra long natural webbing handles and original OBEY art
- 20" x 15" x 5"
- 100% Cotton



A.

	COLOR	O/S				
A.	BLACK					



A.

**BAD BRAINS LIGHTNING PIN
100220017**

- OBEY Bad Brain Lightning bolt pin with black enamel filled debossed OBEY logo and alloy finish gold metal
- 2 locking backs to keep pin in place
- 100% Alloy

	COLOR	O/S				
A.	SHINY GOLD					

**BAD BRAINS CONQUERING LION
100551273**

- Large cotton canvas tote bag with extra long natural webbing handles and original OBEY art
- 20" x 15" x 5"
- 100% Cotton



A.

	COLOR	O/S				
A.	NATURAL					



A.

	COLOR	O/S				
A.	GOLD					

漢母字音表

CUT + SEW



A.

**BAD BRAINS BOMBER JACKET
221800147**

- Cropped relaxed fit MA-1 insulated flight satin bomber jacket
- Comes with a water resistant coating and quilted interior
- Features custom Bad Brains and Shep artwork
- SHELL: 100% Nylon; LINING: 100% Polyester; FILLING: 100% Polyester

	COLOR	XXS	XS	S	M	L
A.	BLACK					

CUT + SEW



A.

**BAD BRAINS OXFORD SHIRT
281200072**

- Classic tailored button-down menswear inspired shirt
- Features the iconic Bad Brains bolt embroidered at the chest and a custom screenprint of Bad Brains during their early days in the hardcore D.C. punk scene
- 100% Cotton

	COLOR	XXS	XS	S	M	L
A.	WHITE					



A.

**BAD BRAINS SHIRT JACKET
221160002**

- Relaxed fit and vintage washed military shirt jacket
- Comes with a screened interior back panel print created by Shepard Fairey
- Features custom OBEY and Bad Brains embroidered chest patches and an iconic bolt pin at collar
- 100% Cotton

	COLOR	XXS	XS	S	M	L
A.	ARMY					



A.

**BAD BRAINS CREW
211600079**

- Relaxed fit raglan sleeve crewneck with striped rib trim details and side panel rib insets
- Comes in a nep french terry with custom pin at chest and mil spec label at hem
- A true Obey collectible, this crew will only continue to get better with wash and wear over time
- 80% Cotton / 20% Polyester

	COLOR	XXS	XS	S	M	L
A.	FOREST ARMY					

PRINTABLES



A.



B.

BAD BRAINS ROCKET
264620944

- Relaxed fit tattered and torn boyfriend inspired tank
- Features extreme raw cut armholes, novelty dye treatments and perfectly placed holes—designed as a repurposed Bad Brains tee cut and shredded to perfection
- Custom Bad Brains X OBEY artwork
- 100% Cotton

	COLOR	XXS	XS	S	M	L
A.	BLEACH SPILL					
B.	DIRTY WASH					

PRINTABLES



A.



B.

BAD BRAINS PUNK ROCK A-GO-GO
265260958

- Relaxed fit classic crew neck tee
- Features a delicate soft wash
- Custom Bad Brains X OBEY artwork
- 100% Cotton

	COLOR	XXS	XS	S	M	L
A.	DUSTY BLACK					
B.	GREY					



A.



B.

BAD BRAINS X OBEY WORLD TOUR '89
266340894

- This tee has been specially engineered to represent that long-loved and worn-until-dissolved look. Reminiscent of Bad Brains 1989 tour merch
- Featuring destroyed edging details and a color faded effect with novelty front and back print techniques. Custom Bad Brains X OBEY artwork
- 100% Cotton

	COLOR	XXS	XS	S	M	L
A.	DUSTY OFF WHITE					
B.	DUSTY BLACK					



A.



B.

RETURN OF THE ORIGINAL BAD BRAINS
265440965

- Traditional boyfriend fit raglan
- Featuring a multi-step wash treatment that offers the softest most worn-in results
- Combined with contrast color blocked details and novelty print techniques for a truly unique piece. Custom Bad Brains X OBEY artwork
- 52% Cotton / 48% Polyester

	COLOR	XXS	XS	S	M	L
A.	CREME / BLACK					
B.	MULTI					

PRINTABLES



A.



B.

BAD BRAINS HAS A POSSE
266280960

- Fitted mock turtleneck shirt contours the natural waist
- Custom Bad Brains X OBEY artwork
- Made in the USA
- 92% Rayon / 8% Spandex

	COLOR	XXS	XS	S	M	L
A.	BLACK					
B.	WHITE					

PRINTABLES



A.

BLACK DOTS
265260961

- Relaxed fit classic crew neck tee
- Features a delicate soft wash
- Custom Bad Brains X OBEY artwork
- 100% Cotton

	COLOR	XXS	XS	S	M	L
A.	OPTIC WHITE					



A.



B.

OBEY X BAD BRAINS SKELETON
265830962

- Relaxed fit boyfriend inspired long sleeve crew neck tee
- Front and back custom Bad Brains X OBEY artwork
- Removable Bad Brains pin at front chest
- 100% Cotton

	COLOR	S	M	L		
A.	PINK					
B.	WHITE					



A.

OBEY X BAD BRAINS PROPAGANDA
212220963

- Relaxed fit vintage inspired pullover hoodie with front kanga pocket
- Cut from a soft and cozy brushed back fleece
- Features unique print techniques and an engineered destroy treatment. Custom Bad Brains X OBEY artwork
- 80% Polyester / 20% Cotton

	COLOR	XXS	XS	S	M	L
A.	WHITE					

PRINTABLES



A.

BAD BRAINS PMA PHOTO
211920964

- Long sleeve crew neck fleece featuring an oversized fit with rib cuffs and neckband
- Cut in a soft brush back fleece with a custom vintage wash for cozy worn-in vibes
- Custom Bad Brains X OBEY artwork and removable Bad Brains pin at front chest
- 50% Cotton / 50% Polyester

	COLOR	S	M	L		
A.	SAND					

